

ANUTHAM  
BY HARI GROUP



MEET NEW STANDARD  
OF COMFORT AT ANUTHAM

ABOUT THE GROUP :



A dream once Hari Group is now Real estate legacy of Gandhinagar since 1992. Hari Group is building residential and commercial projects understanding the specific needs of the end-user in the Gandhinagar, Kadi and other cities of Gujarat. Today the group has a strong footprint of more than 38 projects and over 50 lakh sq. ft. Infrastructure developed that has created a valued lifestyle for 4000+ families and businesses. Currently, the group has more than 10 Lakh Square Feet of work under construction in various segments of real estate



ABOUT THE PROJECT :

Design gives you all comfort in magnificent 3 bHK homes. Introduced minimum number of homes to give luxuries interior and landscape spaces. Exterior facade developed such a way so that make own identity from surrounding area.

56  
AMAZING  
FAMILIES

ANUTHAM  
BY HARI GROUP

— 3 BHK ELITE LAVISH LIVING —









## POSH & SPLENDOUR LIFE STARTS FROM HERE

Your home should be a story of who you are, and be a  
collection of what you love just at Anutham.

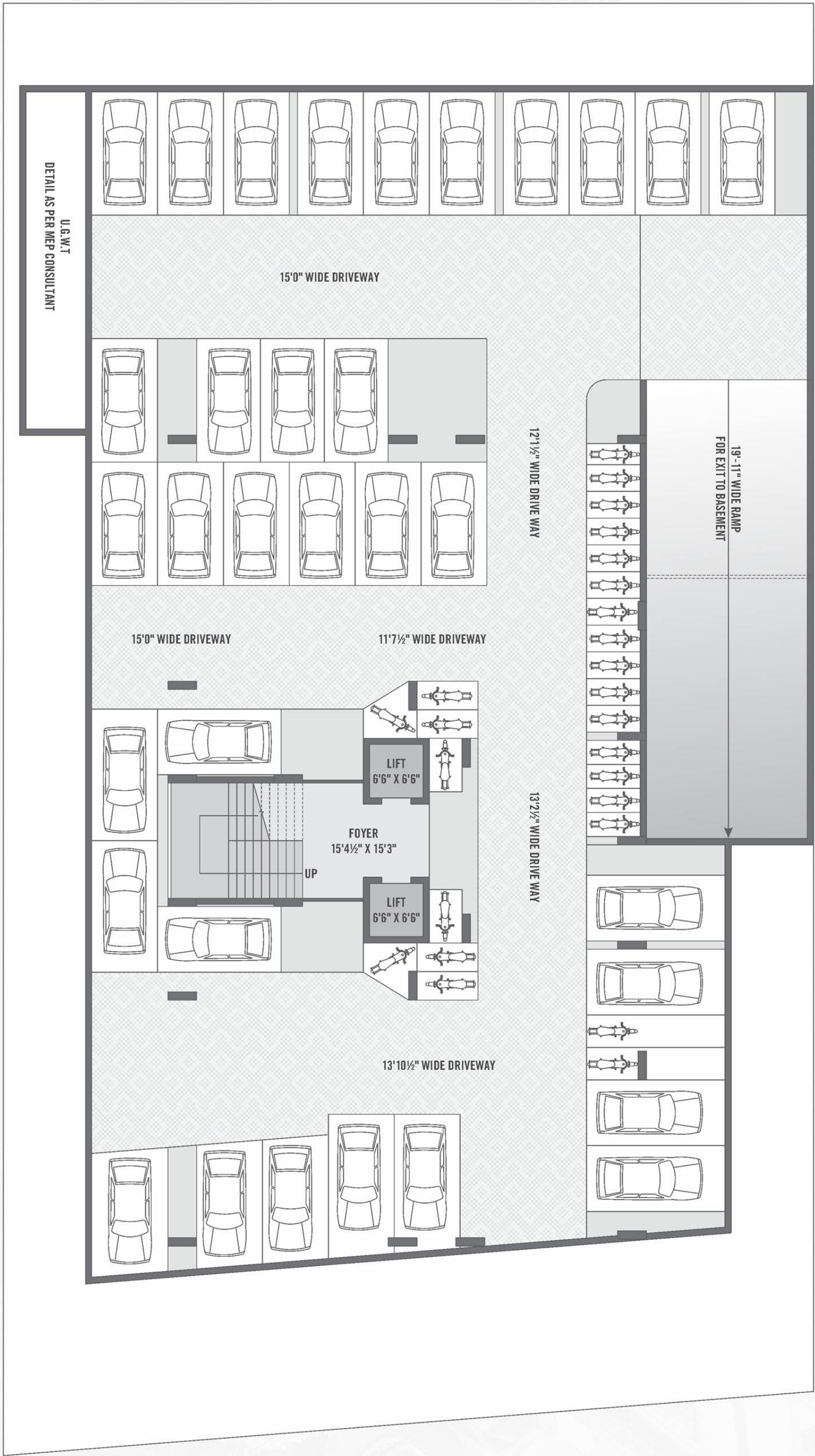
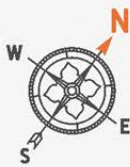
ANUTHAM  
BY HARI GROUP

STUNNING | UNIQUE | UPSCALE

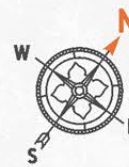




BASEMENT  
Floor Plan



GROUND  
Floor Plan

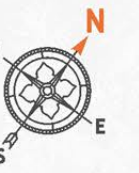




TYPICAL  
Floor Plan



TERRACE  
Floor Plan

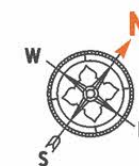








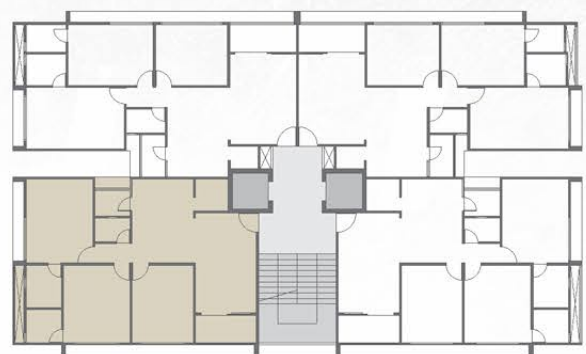
3 BHK  
Unit Plan



TYPE - 1



3 BHK  
Unit Plan



TYPE - 2







## A DESTINATION FOR THE NEW MILLENNIUM STARTS HERE

This homes offer that warmth and comfort what yo need  
at the moment you step in

ANUTHAM  
BY HARI GROUP

LUXURY | PROSPERITY | SERENITY







ELEGANT | EXCEPTIONAL | BRIGHT



ON THESE BEAMS, DREAMS OF YOUR  
BRIGHT FUTURE HAS BEEN BUILT

This breathtaking community will be home green luxury to some of  
the most unseen marvels inspired by nature

SPECIFICATIONS :



**STRUCTURE :**  
R.C.C. frame structure, outside plaster  
With texture, inside mala finish plaster.



**DOORS & WINDOWS :**  
Decorative wooden door for main entrance, other doors are flush  
Door with wooden frame, aluminum section windows.



**FLOORING :**  
Standard 800x800 double charge vitrified tiles.  
Wooden flooring in master bedroom.



**PAINTS :**  
All exterior walls with acrylic paint of standard quality and  
All interior walls will be white putty.



**KITCHEN :**  
Standard quality polished granite in platform,  
S.S. sink of standard quality.  
Dado tiles up to lintel level.



**TOILET / BATHROOMS :**  
Designer tiles in all toilet up to lintel level. Good quality  
Bath fittings.  
Good quality of sanitary - ware.



**ELECTRIFICATION :**  
Concealed cooper wiring and modular switches  
Of standard company



**AC PIPING :**  
Provision for Concealed cooper piping and AC points in  
Each room.





ANUTHAM  
BY HARI GROUP

ANUTHAM BY HARI GROUP  
Near Randheja Chokadi, Randheja, Gandhinagar.

CONTACT : +91 73595 77677

PROJECT BY :

हरि GROUP<sup>TM</sup>  
Since 1992

DEVELOPERS

HN HARI  
REALTY PROJECTS LLP

ARCHITECT



STRUCTURE ENG.



SCAN ME FOR

LOCATION



Developers reserve the rights for alteration of specification and design. | all dimensions / approximate, average & subject to variations. Irregular payments shall cause cancellation of booking. AMC property tax, GST, electricity, legal expenses, service tax & other govt. charges, stamp duty & registration, maintenance charges, maintenance deposit & membership fees shall be borne by the members. this brochure is not to be treated as part of the legal document, it is for the easy presentation of the project. | all this images are for artistic purposes only.

Disclaimer: the details, facts, specifications, figures mentioned in brochure are indicative for information purpose only and are subject to modifications/compliance required as per RERA act.





A DESTINATION FOR LIFESTYLE THAT SUITS YOUR STATURE